



What marketing recommendations did you miss by not having Progressive Ag in 2016?

2015 Soybean Catch up Sales made in 2016

- ✓ 80% soybeans priced at an average of \$11.18 July '16 futures
 - ❖ 20% @ \$10.45 (5/3/16)
 - ❖ 20% @ \$11.15 (6/2/16)
 - ❖ 20% @ \$11.75 (6/8/16)
 - ❖ 20% @ \$11.38 (6/21/16)

2016 Energy Hedges

- ✓ Bought (2/23/16) 50% of energy needs @ \$32.15 April crude oil futures (or equivalent month of use).
- ✓ Bought (3/30/16) last 50% of energy needs at \$40.43 July '16 futures (or equivalent in later months)
- ✓ Hedgers liquidated (5/31/16) half of long crude oil (energy hedge) at \$49.83.
- ✓ Bought (8/1/16) 50 % of energy needs at \$40.98
- ✓ Hedgers liquidated (8/18/16) half of long crude oil contracts at \$48
- ✓ Rolled (9/14/16) remaining contracts to Dec crude oil @ \$1.17 premium
- ✓ Hedgers liquidated (10/10/16) remaining crude oil contracts at \$52

2016 Crop - Soybean/Corn Sales Rec's

- ✓ 80% soybeans sold at an average \$11.14 November '16 & 2% at \$10.45 January '17 futures
 - ❖ 20% @ \$10.45 (5/10/16)
 - ❖ 20% @ \$11.15 (6/7/16)
 - ❖ 20% @ \$11.75 (6/10/16)
 - ❖ 20% @ \$11.20 (6/21/16)
 - ❖ 2% @ \$10.45 (11/28/16) Jan '17 futures
- ✓ 20% corn sold at \$4.39 December '16 futures price (6/8/16)

2016 Canola Sales Rec's

- ✓ 15% @ 529.30/MT CAD Jan '17 (12/2/16) or \$18.07/cwt USD

2016 Feed Cattle Sales Rec's

- ✓ Sold @ \$141.00 November '16 Futures/puts (7/6/16)
- ✓ Sold @ \$142.25 November '16 Futures/puts (8/4/16)

2017 Soybean Sales Rec's

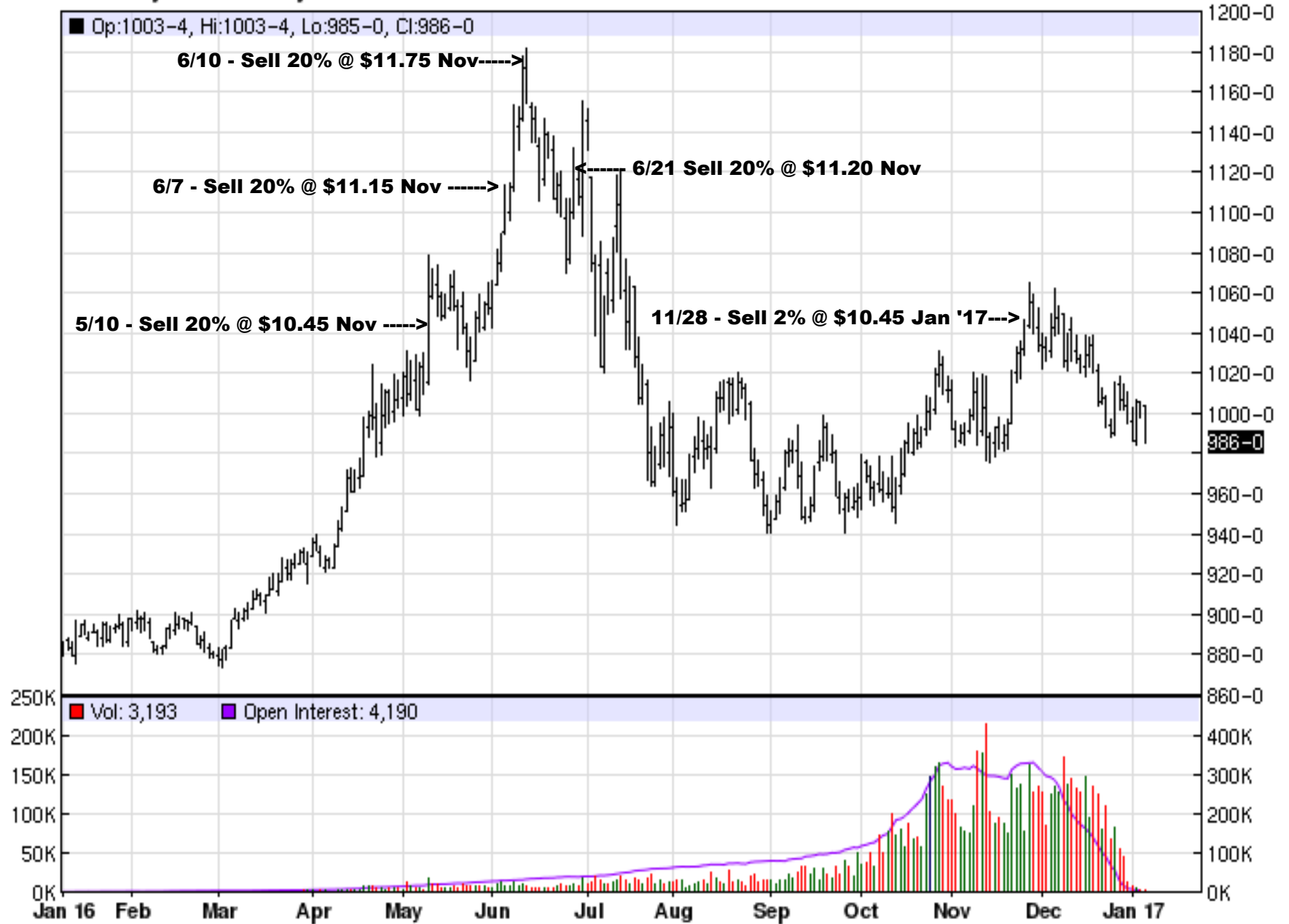
- ✓ Sold 10% @ \$10.15 November '17 (11/23/16)

Isn't it time to buy a marketing service from Progressive Ag?

Progressive Ag Recommendations 2016

November '16 Soybeans

ZSF17 - Soybeans - Daily OHLC Chart



Disclaimer: Past Performance is not indicative of future results.